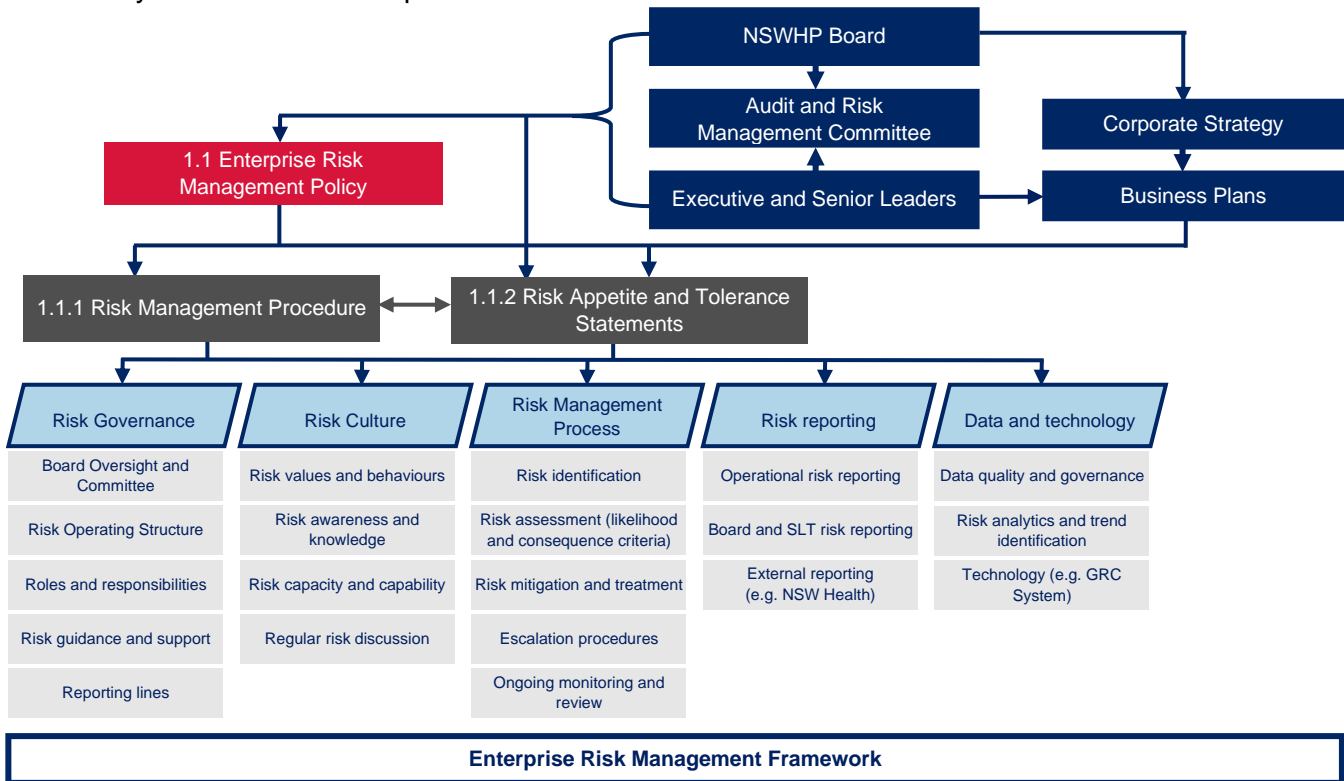


1. Purpose

Enterprise risk management at NSW Health Pathology (NSWHP) comprises several components, each with a critical role in ensuring the effective and consistent management of risk across NSWHP. This guidance document provides an overview of our risk management framework and outlines the connectivity between each component.



1.1. Enterprise Risk Management Policy – NSWHP PD 034

The Enterprise Risk Management Policy communicates NSWHP’s commitment to ensuring a robust and consistent approach to risk management across the Health Service and fostering a positive risk culture. It details the key principles through which NSWHP manages risk and sets out roles and responsibilities in relation to risk management across the organisation. The application of the Enterprise Risk Management Policy is supported by NSWHP’s Risk Management Procedure - NSWHP PR 026 and Risk Appetite Statement - NSWHP CG 008

1.1.1. Risk Management Procedure

NSWHP’s Risk management procedure details the process through which risk is identified, assessed, mitigated, treated, and monitored and outlines the relevant tools and resources available to support this process, such as the likelihood and consequence criteria and risk assessment templates.

1.1.2. Risk Appetite and Tolerance statements

The NSWHP Risk Appetite Statement articulates the amount and type of risk that NSWHP is prepared to pursue, retain, or take to achieve our goals and strategic objectives. The Risk Tolerance statement operationalises risk appetite by defining the upper and lower limits of acceptable risk. Staff should refer to the Risk appetite and tolerance to inform risk management activities and decision-making.