

NSW Perinatal Postmortem Service

Postmortem transportation guide

(May 2023)

Procedure

- Access the [NSW Health Pathology website](http://www.pathology.health.nsw.gov.au/clinical-services/perinatal-post-mortem-service) to view all perinatal postmortem guides: <http://www.pathology.health.nsw.gov.au/clinical-services/perinatal-post-mortem-service>
- Notify the Perinatal Postmortem Service (PPMS) by making a referral via portal on Perinatal Postmortem Service Web page as soon as possible on identifying a postmortem case.
- Make a booking with a registered mortuary transport company, funeral home or pathology service (for unregistered births only) to transfer baby and placenta to referral hospital for Postmortem.
- Maternity units should discuss preferred funeral arrangements with the family. For unregistered babies, discuss and document their preferred options for funeral, return of remains to family or hospital cremation following postmortem examination.
- Consider if transport needs to be booked for return to a funeral home or the referring hospital.
- Prepare baby and placenta for transport as per the Preparation of Baby and Placenta Guide.
- Transfer baby and placenta to mortuary for collection by courier/funeral transport service.
- If requiring transportation, registered babies must be transported by a registered mortuary transport company. Several private companies provide this service, and it is likely that your hospital already has a contract with one of these companies, but please reach out to the PPMS if you require guidance.

Note

- The cost of transport will vary depending on the location of the baby and options for return.
- Parents must not be invoiced for transport costs by Pathology. Costs will be covered by the referring hospital.
- To support the bereavement process, babies for postmortem examination can be kept with families, preferably in a cold cot (up to 12 hours) or mortuary refrigeration intermittently. Families wishing to spend longer than 24 hours with their babies may do so provided they are informed that this may affect the quality of the postmortem examination.

NSW Perinatal Postmortem Service

Postmortem transportation guide

(May 2023)

Key contacts

Perinatal Postmortem Service Team

Susi Guinane

- Mobile: 0436 698 366
- Office: (02) 9845 3503
- Email: Susan.Guinane@health.nsw.gov.au

Fiona O'Shannessy

- Mobile: 0476 276 283
- Email: Fiona.Oshannessy@health.nsw.gov.au

Service email

Use this email if there are any issues with the PPMS website.

- Email: NSWPATH-PerinatalPostMortemService@health.nsw.gov.au

On-call Pathologist (ask to be transferred to the on-call perinatal or anatomical pathologist)

The Children's Hospital, Westmead

- (02) 9845 0000

John Hunter Hospital

- (02) 4921 3000

Prince of Wales Hospital

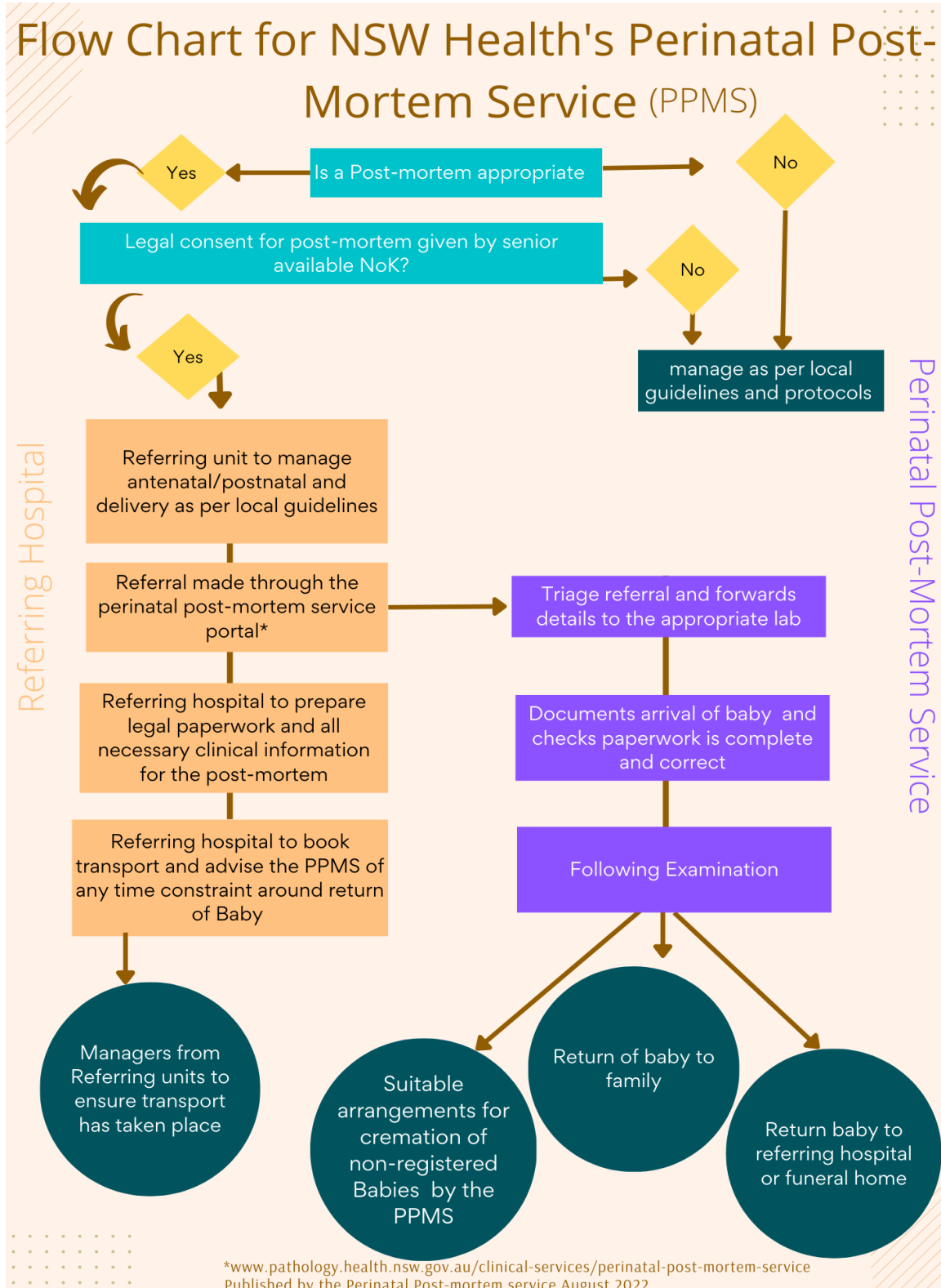
- (02) 9382 2222

NSW Perinatal Postmortem Service

Postmortem transportation guide

(May 2023)

Appendix A Transportation Flowchart



NSW Perinatal Postmortem Service

Postmortem transportation guide

(May 2023)

LHD	Birth unit	PM Location
Northern NSW	Lismore	Brisbane/JHH*
Mid North Coast	Port Macquarie	JHH
	Coffs Harbour	JHH
	Kempsey	JHH
	Macksville	JHH
Hunter New England	Armidale	JHH
	Belmont	JHH
	Glen Innes	JHH
	Gloucester	JHH
	Gunnedah	JHH
	Inverell	JHH
	John Hunter	JHH
	Maitland	JHH
	Moree	JHH
	Muswellbrook	JHH
	Narrabri	JHH
	Scone	JHH
	Singleton	JHH
	Tamworth	JHH
	Taree/Manning	JHH
Western NSW	Bathurst	Westmead
	Bourke	Westmead
	Coonamble	Westmead
	Cowra	Westmead
	Dubbo	Westmead
	Forbes	Westmead
	Mudgee	Westmead
	Orange	Westmead
	Parkes	Westmead
Central Coast	Gosford	JHH
	Wyong	JHH

NSW Perinatal Postmortem Service

Postmortem transportation guide

(May 2023)

Nepean Blue Mountains	Blue Mountains	Westmead
	Lithgow	Westmead
	Nepean	Westmead
Western Sydney	Auburn	Westmead
	Blacktown	Westmead
	Westmead	Westmead
South West Sydney	Bankstown	Westmead
	Bowral	Westmead
	Campbelltown	Westmead
	Fairfield	Westmead
	Liverpool	Westmead
Illawarra Shoalhaven	Shoalhaven	POW
	Wollongong	POW
Northern Sydney	Manly	Westmead
	Mona Vale	Westmead
	Royal North Shore	Westmead
	Hornsby Ku-Ring-Gai Hospital	Westmead
Sydney	Canterbury	Westmead
	Royal Prince Alfred	Westmead
South East Sydney	Royal Hospital for Women	POW
	St George	POW
	Sutherland	POW
Southern NSW	Goulburn	Westmead*
Murrumbidgee	Cootamundra	ACT/Westmead*
	Griffith	Westmead*
	Leeton	Westmead*
	Narrandera	Westmead
	Temora	ACT/Westmead*
	Wagga Wagga	Westmead
	Young	ACT/Westmead/JHH*